

Snabbkommandon

Urval av vanliga kommandon samt musgester

Gemensamma med Windows

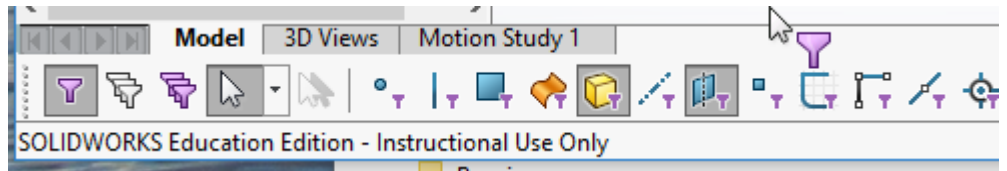
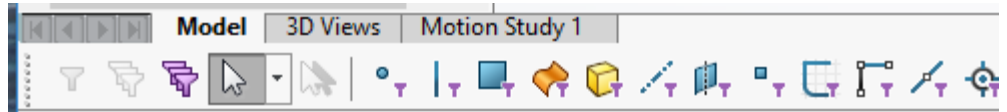
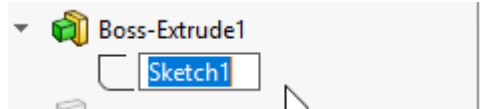
- CTRL + N → File – New
- CTRL + O → File - Open
- CTRL + S → File - Save
- CTRL + P → File – Print

- CTRL + Z → Undo
- CTRL + Y → Redo

- CTRL + X → Cut
- CTRL + C → Copy
- CTRL + V → Paste

Funktionstangenter

- F1 → Hjälp
- F2 → Byta namn på valt objekt
- F5 → Refresh File Explorer
→ Hide/show Selection Filters toolbar
- F6 → Enable/disable Selection Filters
- F9 → Hide/show Feature Manager
- F10 → Hide/show Toolbars
- F11 → Full Screen



Filter

- E → Filter Edges




- V → Filter Vertex

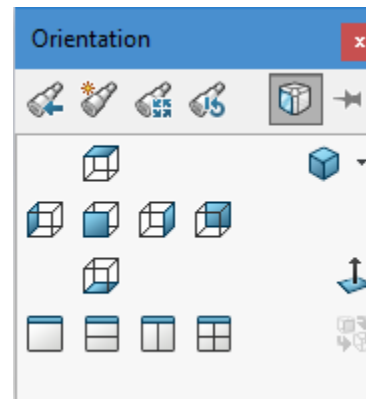


- X → Filter Faces



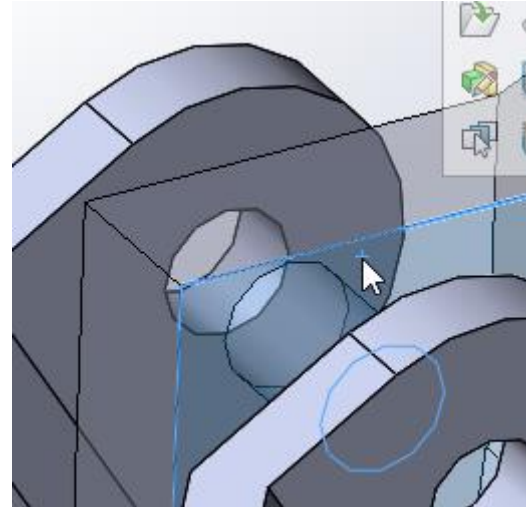
Vyer

- CTRL + 1 → Front
- CTRL + 2 → Back
- CTRL + 3 → Left
- CTRL + 4 → Right
- CTRL + 5 → Top
- CTRL + 6 → Bottom
- CTRL + 7 → Isometric
- CTRL + 8 → Normal To 
- F → Zoom to Fit
- Z → Zoom out
- SHIFT + Z → Zoom In
- CTRL + SHIFT + Z → Previous View
- Space → Orientation



Markering av objekt

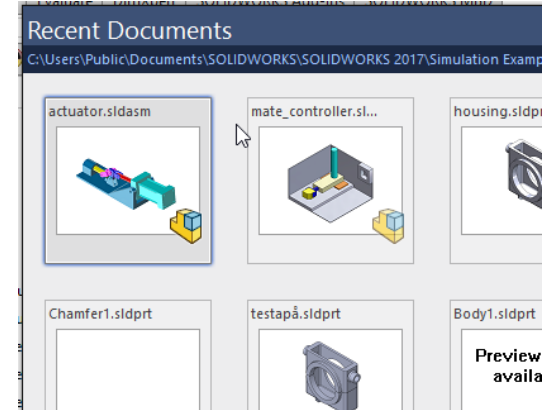
- CTRL + Select → Lägger till/tar bort objekt till markering
- SHIFT + Select → Lägger till objekt till markering
→ Markerar transparent objekt



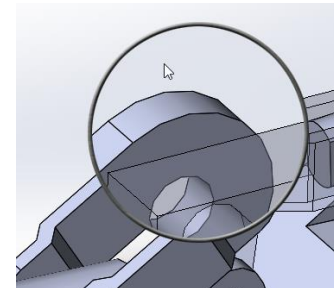
Diverse

- ESC → avbryter kommando
- ENTER → upprepar senaste kommando
 - acceptera Default val i dialoger
 - avsluta kommando (istället för att klicka på grön bock)

- R → visar senaste dokument

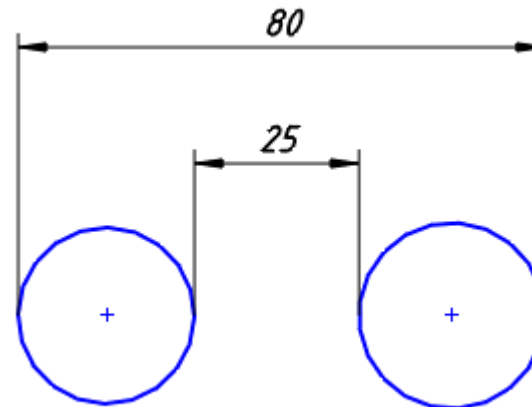
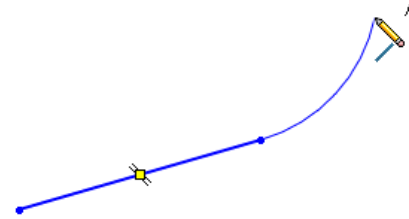


- G → visar förstoringsglaslet



Sketch

- L → Line
- A → skiftar Line/Arc
- CTRL hålls nere under sketchande
→ automatiska relationer inaktiveras
- SHIFT hålls nere under måttsättning
→ min/max-mått på cirklar/bågar kan sättas



Dokument / program

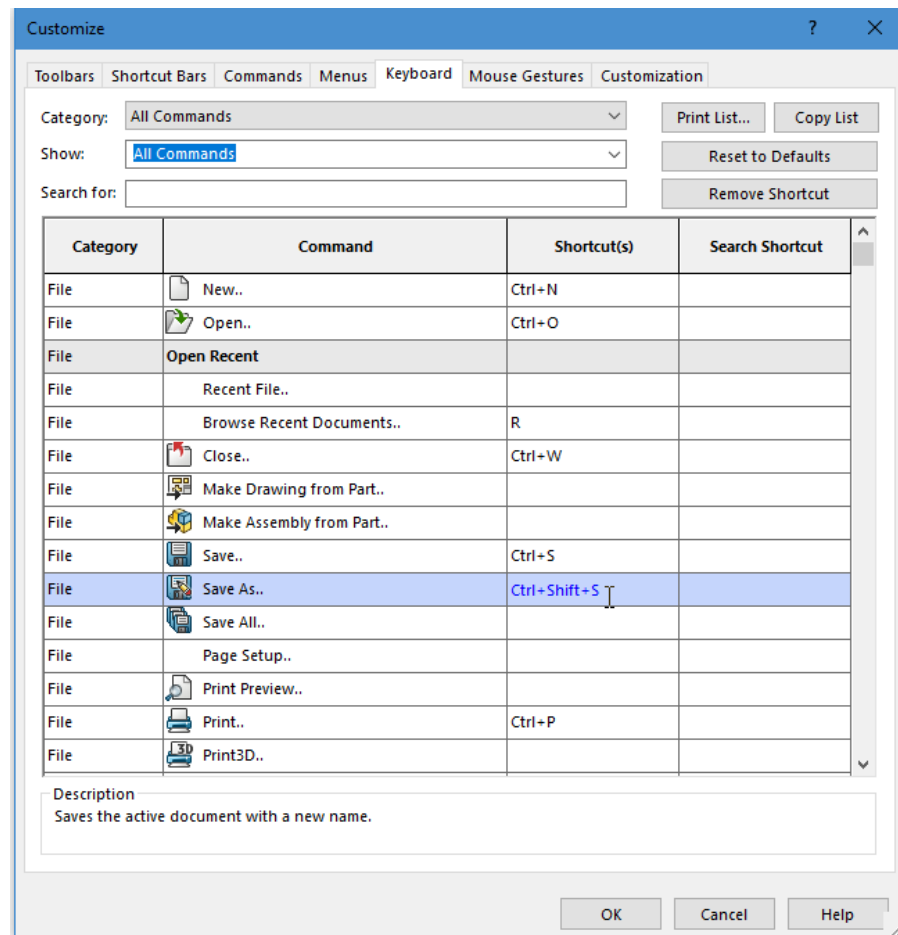
- ALT + TAB → bläddra mellan öppna program
- ALT + SHIFT + TAB → bläddra baklänges

- CTRL + TAB → bläddra mellan öppna SolidWorks-dokument
- CTRL + SHIFT + TAB → bläddra baklänges

- CTRL + F4 → stäng aktivt dokument
- ALT + F4 → stäng aktivt program

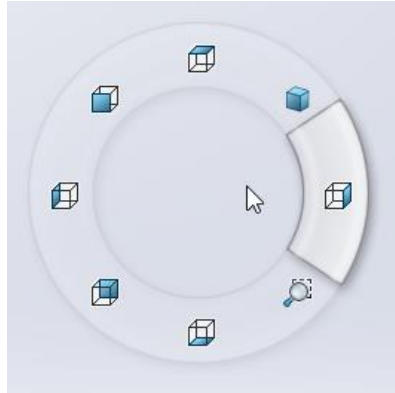
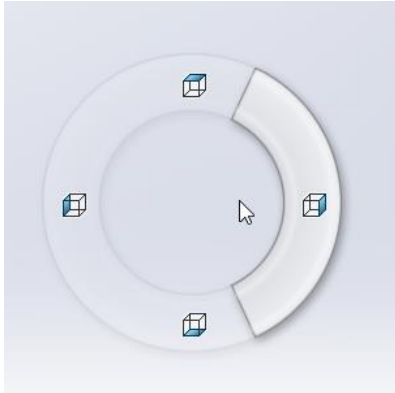
Skapa egna snabbkommandon

- Dubbelklicka i Shortcut(s)
- Tryck knapp/knappkombination



Musgester

- Högerklicka och dra musen
- Man kan välja 4 eller 8 typer av musgester



Customize

Toolbars | Shortcut Bars | Commands | Menus | Keyboard | Mouse Gestures | Customization

Category: All Commands

Show only commands with mouse gestures assigned

Search for:

Enable mouse gestures

4 gestures

8 gestures

Print List...

Reset to Defaults

Category	Command	Part	Assembly	Drawing	Sketch
Tools	Corner Rectangle..				↓
Tools	Smart..			↑	↑
Tools	Circle..			→	→
Tools	Line..			←	←
Insert	Model..			↓	
Others	Bottom	↓	↓		
Others	Top	↑	↑		
Others	Right	→	→		
Others	Left	←	←		
File	New..				
File	Open..				
File	Recent File..				
File	Browse Recent Documents..				
File	Close				

Description
Saves the active document.

OK Cancel Help

Skapa egna musgester

- Dubbelklicka i lämplig kolumn
- Välj musgest i listan
- Man kan välja att använda 4 eller 8 typer av musgester

